

# NuStreams MPT Programs



## Customized Mass Production Test Programs for NuStreams-2000/600

### FEATURES SUMMARY

- Customized programs for testing Ethernet devices such as Layer 2 / 3 Non-managed / Managed Switch, Hub, Firewall, IP Sharing Device, Router, etc.
- Customizable test settings:
  - Frame Data (DA/SA, DIP/SIP, Padding, etc.)
  - Stream Control Mode (Frame Length, Inter-Frame Gap, Inter-Burst Gap, etc.)
  - Media Type (Speed, Duplex Mode)
  - Protocols (IPv4, ARP, ICMP/IP, etc.)
  - VLAN / MPLS
  - Test Duration, etc.
- Typical Tests:
  - POST (Power On Self Test) via console port
  - Layer 2 (Filtering, Forwarding, Flow Control, Broadcast, VLAN, Data Integrity, etc.)
  - Layer 3 (IP Packet Switching, MPLS, Ping, etc.)
  - QoS (up to 4 queues)
- Simultaneous testing of multiple DUTs on a single NuStreams-2000/600 network testing system
- Detailed log for test result tracking
- Platforms:
  - Operating System: Microsoft Windows 2000 or Windows XP
  - Development Tools: Microsoft Visual C++ or Borland C++ Builder

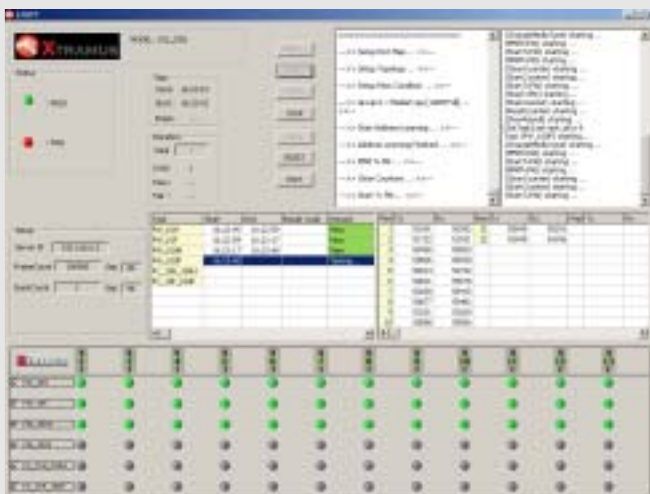
### MAJOR BENEFITS

- Time saving:
  - Generate and analysis more packets in shorter time
  - Integration of post production DUT settings in the test procedure
- More reliable and accurate than traditional solutions:
  - Wire speed layer 2 ~ 3 packet generation and analysis for 10 / 100 / 1000Mbps tests that reveal flaw detectable only under strict condition
  - Error packet generation and analysis
  - Unique data integrity (X-Trailer) feature for packet buffer testing
- Highly integrated and automatic:
  - The MPT program may take order from a central server to download test scripts for different DUT models and upload the test results automatically
  - Activities such as MAC Writing, Password & Client Name setting, etc. may be incorporated into the MPT program to simplify the production process
- Low software development effort:
  - Turnkey solutions available from Xtramus Technologies or its distributors
  - Script based programs that allow one MPT program to test different models of DUTs by simply modifying the test scripts

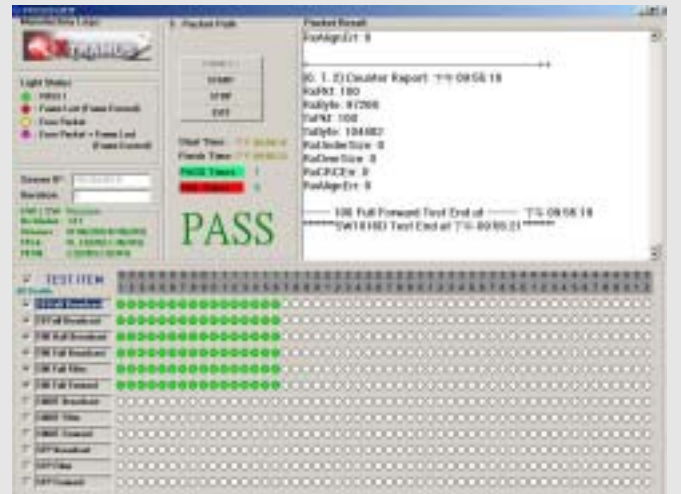
### KEY APPLICATIONS

- Production testing and quality assurance during manufacturing process

## Sample Screen Shots



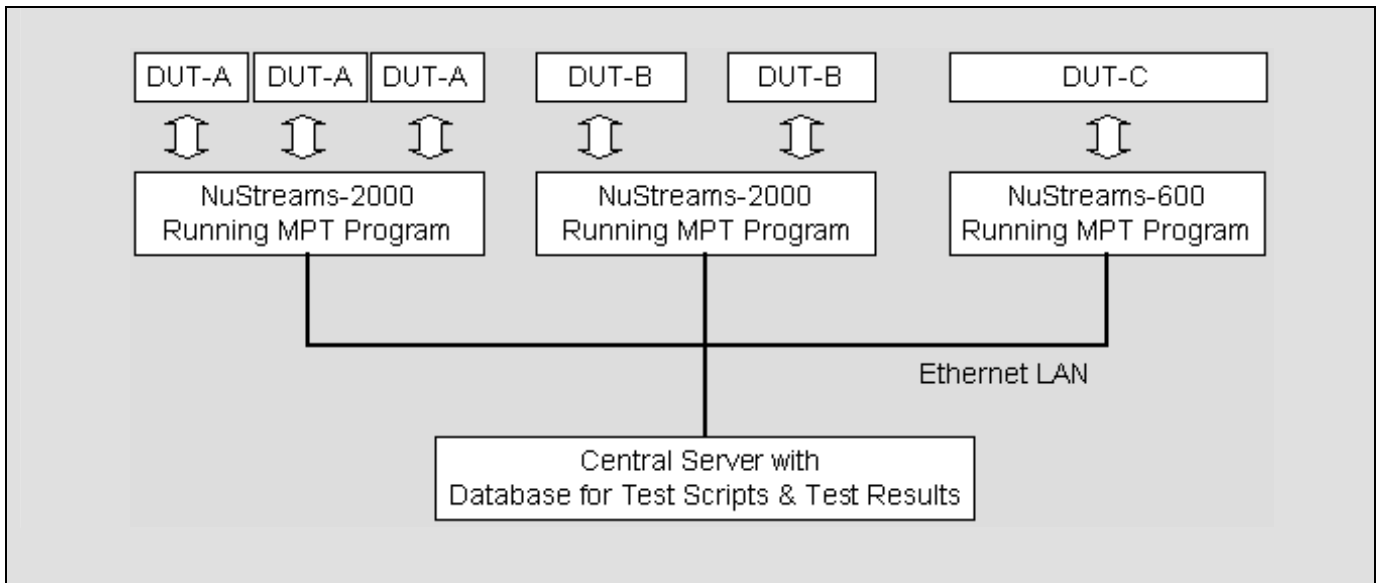
**MPT Program (Scalable Port & Test Items)**



**MPT Program (Fixed Port & Test Items)**

## OVERVIEW

### TYPICAL CLIENT – SERVER APPLICATION DIAGRAM



The **MPT Program** is a customizable solution that enables manufacturer to perform highly reliable and accurate mass production test and quality assurance in wire speed during manufacturing process using NuStreams-2000/600 network testing system.

The **MPT Program** can be developed as independent software operating on standalone NuStreams-2000/600, or as client software operating on NuStreams-2000/600 connected to a central server. Detailed log showing the result of each port tested and the pass/fail status of a DUT may be kept locally or in a central location for later retrieval.

Simple yet powerful, the **MPT Program** may incorporate DUT configuration tasks such as VLAN setting, MAC writing, password & client name setting, etc. into the test procedure to simplify the post production process and increase the throughput of the production line.

The **MPT Program** can be configured to conduct test on different DUT models by changing the test scripts. Thus, eliminating the need to develop DUT specific testing software. The combination of script-based configuration and centralized monitoring & control, makes it possible to develop a fully automatic testing line.

Subject to the availability of the test ports, the **MPT Program** is capable of testing multiple DUTs on a single NuStreams-2000/600 network testing system to maximize testing resource utilization and increase test throughput.

The **MPT Program** is running on industry standard Microsoft Windows 2000 or XP platform and developed using Microsoft Visual C++ or Borland C++ Builder. Development of the **MPT Program** may be done by the in-house software team of the manufacturer using the API (Application Programming Interface) provided by Xtramus, or by Xtramus or its distributors on turnkey basis.

Xtramus and its logo are the trademarks of Xtramus Technologies. All other trademarks are the property of their respective owners. The specification may be changed without prior notice. Please contact Xtramus for the latest specification update.

**Omnikor, Inc.**  
1170 Foster City Blvd., Suite 312  
Foster City, CA 94404 USA

Tel: +1(650) 572 0122  
Fax: +1(650) 572 0533  
E-Mail: [info@omnicor.com](mailto:info@omnicor.com)  
[Http://www.omnicor.com](http://www.omnicor.com)